

*What kind of Holiday Family are you?*

Different types of rental accommodation to choose from:

## Nature Family



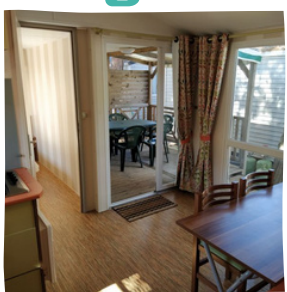
Pitches with electrical hookup for tents, caravans and motor-homes

## Comfort Plus Family+



A modern mobile-home with covered deck  
2 shower rooms  
Heating in the bedrooms  
Air conditioning  
TV & Wi-Fi  
Bed linen provided

## Budget Family



Mobile-home with deck  
TV & Wi-fi

## Comfort Family



Modern mobile-home with covered veranda  
A wheelchair-friendly version available  
Air conditioning  
TV & Wi-Fi

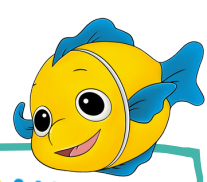
## Our best offers

Find out more on our website:

- Chadotel Members card: 25€ (only to be paid for the first year)
- The Chadotel Unbeatable Offer
- Loyalty points

## Activities

During the day from April\*  
Evening entertainment in July/August  
\*programming according to attendance



## Chadokids

Kids club for 4 to 12 year olds  
During the french school holidays

## What to do?

At the entrance to the campsite, a pretty cycle path takes you to the heart of the Rivesaltes vineyard. Discover typical villages perched on the green hills. In the background, Mount Canigou invites you for a hike in beautiful natural surroundings.



Floralies de Juhègues



## Reservations

### BY INTERNET



**www.chadotel.com**

Secure credit card payments

### BY TELEPHONE



**+33(0)251330505\***  
**+33(0)468282028**

\*Monday to Friday from 9am-6pm  
(reservations with payment by credit card)

### BY POST



By returning the contract with payment to our reservations office  
**CHADOTEL**  
**54 Rue Georges Clemenceau**  
**BP 12**  
**85520 JARD SUR MER**  
**FRANCE**

For information or advice ???

Email us : info@chadotel.com or call



PITCHES	Duration	No. pers.	05.04 / 08.05	08.05 / 12.05	12.05 / 17.05	17.05 / 20.05	20.05 / 22.06	22.06 / 29.06	29.06 / 06.07	06.07 / 13.07	13.07 / 03.08	03.08 / 13.08	13.08 / 20.08	20.08 / 25.08	25.08 / 01.09	01.09 / 22.09
<b>Rates with electricity</b> 	1 night	1 or 2	20	23	20	23	20	23	23	30	40	46	49	40	23	20
<b>Rates with electricity + Private sanitary facilities</b> 	1 night	1 or 2	38	48	38	48	38	53	60	68	75	76	78	75	53	38
<b>Cyclists' Rates</b> 	1 night	1	7	10	7	10	7	10	15	24	29	29	29	24	10	7
		2	10	14	10	14	10	14	21	30	35	35	35	30	14	10

### Our prices include:

Access to the pool complex (depending on weather conditions) : outside swimming pool heated from May, water-slide, lagoon with water games, the children's play area, sports area, zipline, pétanque court, the Kids' Club during the school holidays and evening entertainment in July/August, as well as the bar/restaurant and take-away.



## OPTIONAL EQUIPMENT AND SERVICES RATES

Additional person (over 13 years old)	6.40 € / day	Washing Machine token	6€	CB
Child aged from 2 to 12	4.20 € / day	Dryer token	4.50€	
Children under 2 years	free	Travel cot	3€ / day	
Additional vehicle	3.20 € / day	High chair	2€ / day	
Fridge hire	6 € / day	Baby bathtub	2€ / day	
Pet	4 € / per day/ pitch 6.50€ / per day/ rental unit	Baby pack (cot + high chair + bathtub)	5€ / day	
Cancellation insurance	3% of full amount	Electric barbecue	5€ / day	22€ / week
		Bed sheets - double	14€ / stay	
		Bed sheets - single	12€ / stay	
		Towel kit (1 large + 1 small)	5€ / kit	
		Bike hire	Reservation on-site	
		Tennis	Free	

Remember to reserve any extras in advance



### Additional Fees

Booking fee	25€ (15€ online)
Tourist tax	0.60€ / night / person + 18 years

## Good to know

- The pool complex is reserved for our campsite clients only
- The **electric barrier gate** uses an automatic number plate recognition system (open from 6am to 11:30pm).
- Gas barbecues are permitted.** Electric grills/barbecues are not allowed. There is a **shared charcoal barbecue** with possibility to borrow a grill.
- Minors** unaccompanied by their parents or legal guardians **will not be allowed in the campsite.**
- 1 pet animal only** (tattooed/chipped and vaccinated) per pitch. Category 1 & 2 dogs are not permitted.
- Tents are not allowed on the mobile-home pitches.

### For the rental accommodation : ( ALL non smoking)

- Arrivals from 4pm, departures before 10am  
*Remember to reserve the departure inventory*
- Low season :**
  - Minimum stay 2 nights (3 nights the Ascension weekend)
  - Check in/check out everyday
- High season**
  - Minimum stay 7 nights
  - Arrival/departure days : Saturdays, Sundays and Wednesdays (depending on accommodation)
- Security deposit : 250€.

### For the campsite pitches :

- Anyday arrival, no minimum stay.
- Arrivals/departures at 12am (depending on Reception opening hours during the low season)

