



What kind of Holiday Family are you ?

Different types of rental accommodation to choose from:

Nature Family



Pitches with electrical hookup for tents, caravans and motor-homes

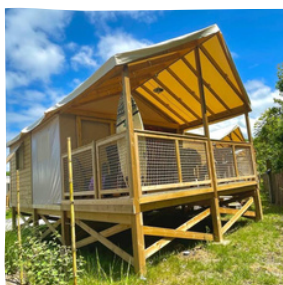
Sea-view pitches

Comfort Plus Family



A modern mobile-home with covered deck
2 shower rooms
Heating in the bedrooms
Air conditioning
TV & Wi-Fi
Bed linen provided


Adventure Family



Elevated lodge with shower and toilet
Wi-Fi

Comfort Family



Modern mobile-home with covered veranda
A wheelchair-friendly version available 
TV & Wi-Fi

Our best offers

Find out more on our website:

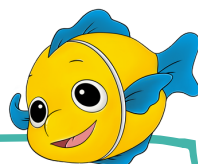
- Chadotel Members card: 25€ (only to be paid for the first year)
- The Chadotel Unbeatable Offer
- Loyalty points



Activities

During the day from April*
Evening entertainment in July/August

*programming according to attendance



ChadöKids

Kids club for 4 to 12 year olds
During the french school holidays

What to do?

The Basque Country offers an unrivalled array of treasures. The whole family will be charmed by its ideal location between the ocean, the mountains and picturesque villages. We have a particular fondness for the villages of Espelette and Ahinoa which delight us with their architecture and traditions.

Port de St Jean de Luz



Reservations

BY INTERNET



www.chadotel.com

Secure credit card payments

BY TELEPHONE



+33(0)251330505*
+33(0)559260774

*Monday to Friday from 9am-6pm
(reservations with payment by credit card)

BY POST



By returning the contract with payment to our reservations office
CHADOTEL
54 Rue Georges Clemenceau
BP 12
85520 JARD SUR MER
FRANCE

For information or advice ???

Email us : info@chadotel.com or call



PITCHES	Duration	No. pers.	05.04 / 08.05	08.05 / 12.05	12.05 / 17.05	17.05 / 20.05	20.05 / 22.06	22.06 / 29.06	29.06 / 06.07	06.07 / 13.07	13.07 / 03.08	03.08 / 13.08	13.08 / 20.08	20.08 / 25.08	25.08 / 01.09	01.09 / 07.09	07.09 / 03.11
Rate with electricity 	1 night	1 or 2	24	35	24	35	24	35	39	42	50	51	56	50	35	30	24
Rate with electricity SEA VIEW 	1 night	1 or 2	29	41	29	41	29	40	45	49	60	61	66	60	41	35	29
Rate with electricity and private sanitary 	1 night	1 or 2	38	63	38	63	38	53	60	68	75	76	81	75	63	43	38
Cyclist rate 	1 night	1	8	18	11	18	11	18	22	25	31	31	31	25	22	18	8
		2	12	24	17	24	17	24	28	31	37	37	37	31	28	24	12

Our prices include:

Access to the pool complex (depending on weather conditions): outside swimming pool and paddling pool heated from May and water games, the children's play area, pétanque court, the kids club during the school holidays and evening entertainment in July/August, as well as the bar/restaurant and take-away.



OPTIONAL EQUIPMENT AND SERVICES RATES

Additional person (over 13 years old)	6.40 € / day	Washing Machine token	6€	CB
Child aged from 2 to 12	4.20 € / day	Dryer token	4.50€	
Children under 2 years	free	Travel cot	3€ / day	
Additional vehicle	3.20 € / day	High chair	2€ / day	
Fridge hire	6 € / day	Baby bathtub	2€ / day	
Pet	4 € / per day/ pitch 6.50€ / per day/ rental unit	Baby pack (cot + high chair + bathtub)	5€ / day	
Cancellation insurance	3% of full amount	Electric barbecue	5€ / day	22€ / week
		Bed sheets - double	14€ / stay	
		Bed sheets - single	12€ / stay	
		Towel kit (1 large + 1 small)	5€ / kit	
		Bike hire	Reservation on-site	
		Tennis	Free	

Remember to reserve any extras in advance



Additional Fees

Booking fee	25€ (15€ online)
Tourist tax	0.60€ / night / person + 18 years

Good to know

- The pool complex is reserved for our campsite clients only
- The **electric barrier gate** uses an automatic number plate recognition system (open from 7am to 11pm).
- Gas and charcoal barbecues are permitted.** Electric grills/barbecues are not allowed.
- Minors** unaccompanied by their parents or legal guardians **will not be allowed in the campsite.**
- 1 pet animal only** (tattooed/chipped and vaccinated) per pitch. Category 1 & 2 dogs are not permitted.
- Tents are not allowed on the mobile-home pitches.

For the rental accommodation : (ALL non smoking)

- Arrivals from 4pm, departures before 10am
Remember to reserve the departure inventory
- Low season :**
 - Minimum stay 2 nights (3 nights the May long weekend)
 - Check in/check out everyday
- High season**
 - Minimum stay 7 nights
 - Arrival/departure days : Saturdays, Sundays and Wednesdays (depending on accommodation)
- Security deposit : 250€.

For the campsite pitches :

- Anyday arrival, no minimum stay.
- Arrivals/departures at 12am (depending on Reception opening hours during the low season)

